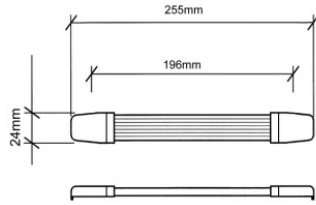


HARDWARE

flight case and cabinet components

SPEAKER HANDLES - vers. 02/2014



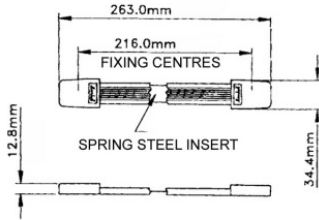
FIXING HOLES Ø 4 mm



MN2421

Strap handle. Steel and plastic covers. length 255 mm.

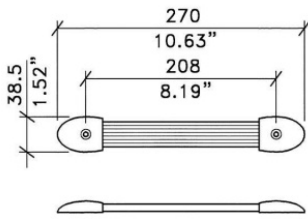
material: Plastic-Steel
 finish: Black
 weight: 83 gr



MN2092

Strap handle. Steel with rubber and plastic covers. length 263 mm.

material: Rubber-Plastic-Steel
 finish: Black
 weight: 100 gr



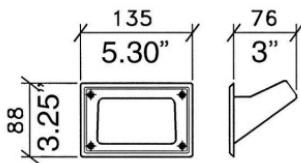
FIXING HOLES 5mm / .20" DIA



MN2094

Strap handle. Steel with rubber and plastic covers. length 270 mm.

material: Plastic-Steel
 finish: Black
 weight: 100 gr



CUT OUT - 102 x 59
 4" x 2.30"

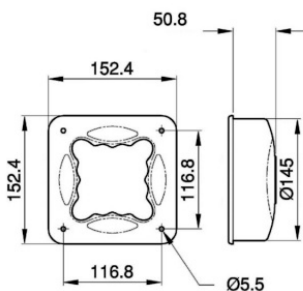
FIXING HOLES Ø4.5 / .17"



MN1452

Small pocket handle without grip

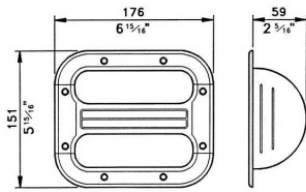
material: Plastic
 finish: Black
 weight: 30 gr.



MN1472

4 Way small pocket handle

material: ABS plastic / steel



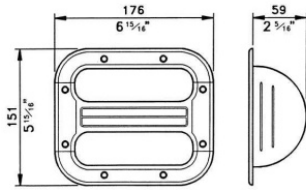
CUTOUT 139.5 x 114 /
5 1/2 x 4 1/2"



MN1442

Small recessed ABS handle. Recess depth 59 mm.

material: Plastic
finish: Black
weight: 150 gr.



CUTOUT 139.5 x 114 /
5 1/2 x 4 1/2"

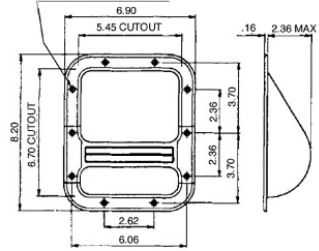


MN1442M

Small recessed ABS handle. Aluminum grip customizable. Recess depth 59 mm.

material: Plastic
finish: Black
weight: 150 gr - M=180 gr

10 HOLES 20 DIA, CSK AT 90° TO .32 DIA

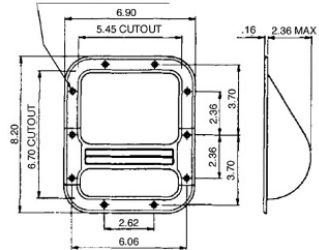


MN1432

Medium ABS bar handle. Recess depth 59 mm.

material: Plastic
finish: Black
weight: 170 gr - M=180 gr

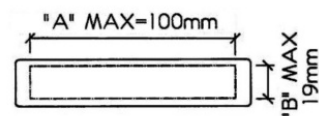
10 HOLES 20 DIA, CSK AT 90° TO .32 DIA



MN1432M

Medium ABS bar handle. Aluminum grip customizable. Recess depth 59 mm.

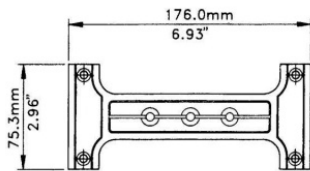
material: Plastic
finish: Black
weight: 180 gr



AC1432

Adhesive label for ABS and aluminum grips.

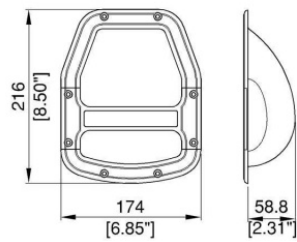
material: Plastic
finish: Black
weight: 10 gr



AC1432M

Aluminum grip for recessed handles
MN1432M and MN1442M

material: Die-cast aluminum
finish: Black
weight: 100 gr



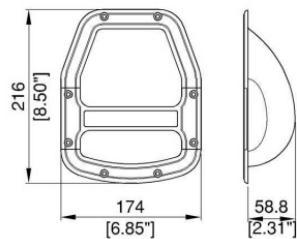
FIXING HOLES 5mm/.20"



MN1462

Medium plastic/ABS bar handle form. Customizable grip. Recess depth 58,8 mm.

material: ABS Plastic
finish: Black
weight: 226 gr



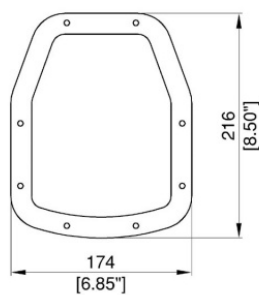
FIXING HOLES 5mm/.20"



MN1462M

Medium ABS bar handle form. Customizable aluminum grip. Recess depth 58,8 mm.

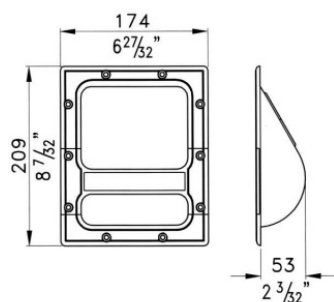
material: ABS Plastic /Aluminium
finish: Black
weight: 380 gr.



AC7364

Back plate for MN1462

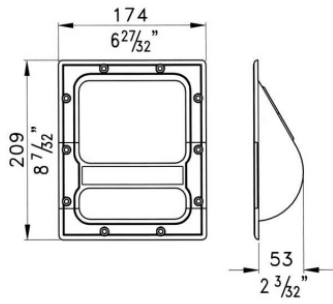
material: Steel 10/10
finish: Zinc



MN1464

Medium diecast handle. Customizable grip. Recess depth 53 mm

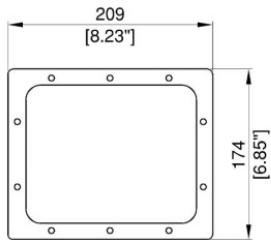
material: Plastic/Steel
finish: Black
weight: 180 gr.



MN1464M

Medium diecast handle with ABS body. Customizable aluminum grip. Recess depth 53 mm.

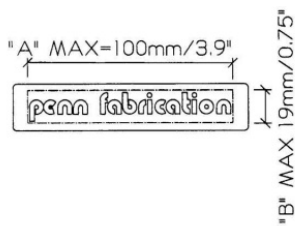
material: Plastic/Aluminium
 finish: Black
 weight: 180 gr.



AC1464

Back plate for MN1464

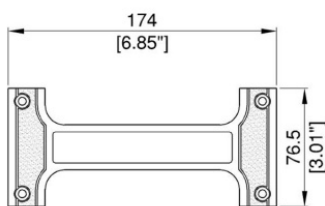
material: Steel 10/10
 finish: Zinc



AC1462

Acrylic adhesive label for AC1462M grip.

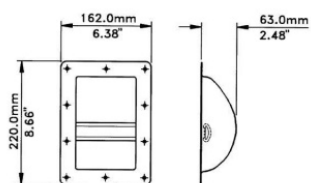
material: Lexan
 finish: Black
 weight: 10 gr.



AC1462M

Diecast aluminum grip for recessed handles MN1462 and MN1464

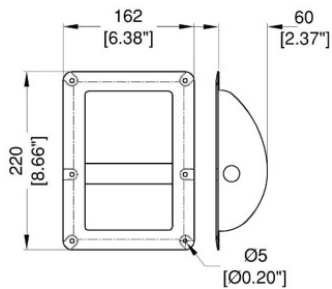
material: Aluminium
 finish: Black
 weight: 100 gr.



MN1484

Medium recessed steel bar handle, recess depth 63 mm

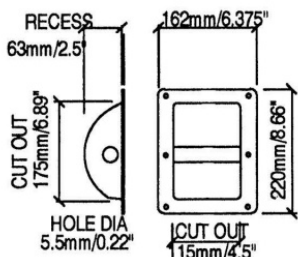
material: Steel 9/10
 finish: Black
 weight: 414 gr



MN1486

Medium recessed steel bar handle with fixing rivet protection. Recess depth 60 mm

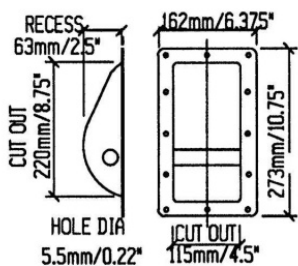
material: Steel 9/10
 finish: Black
 weight: 460 gr



MN1482

Medium recessed steel bar handle, recess depth 65 mm

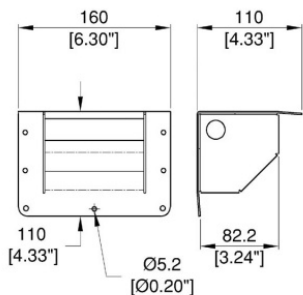
material: Steel 9/10
 finish: Black
 weight: 440 gr



MN1422

Large recessed steel bar handle, recess depth 63 mm

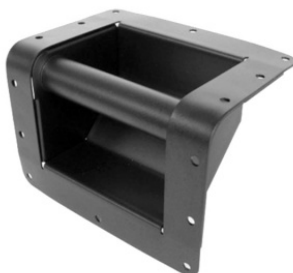
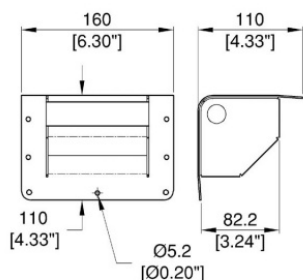
material: Steel 9/10
 finish: Black
 weight: 579 gr



MN1105/91

Corner steel bar handle, for speakers with tight radius

material: Steel 9/10
 finish: Black
 weight: 460 gr



MN1105/90

Corner rounded steel bar handle. Inner radius 13,5 mm.

material: Steel 9/10
 finish: Black
 weight: 460 gr