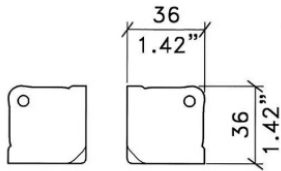


# **HARDWARE**

**flight case and cabinet components**

**SPEAKER CORNERS - vers. 02/2014**

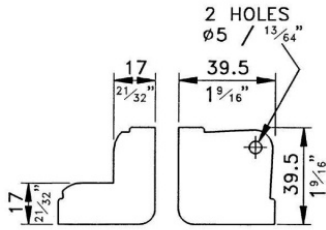


FIXING HOLES 5mm/.20" DIA

### CN1242N

Small flat corner 3 legs, tight radius. Leg depth 36 mm.

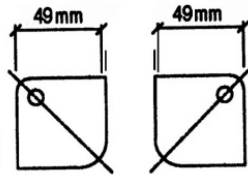
material: Steel 10/10  
finish: Black  
weight: 30 gr.



### CN2282N

Small flat corner 2 legs, for plywood thickness 20 mm. Leg depth and width 39,5 mm.

material: Steel 12/10  
finish: Black  
weight: 30 gr



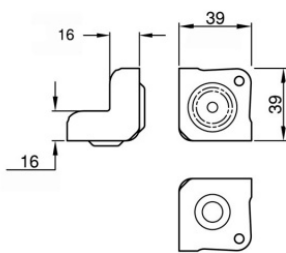
INTERNAL RADIUS 10 mm



### CN5262N

Square flat corner 3 legs with countersunk holes. Leg depth 49 mm

material: Steel 12/10  
finish: Black  
weight: 50 gr



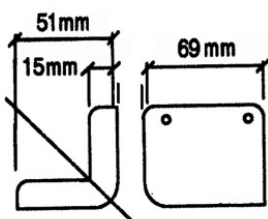
FIXING HOLES Ø 5 mm



### CN2292N

Small cabinet corner stackable, for plywood thickness 18/20 mm. Leg depth 39 mm

material: Steel 12/10  
finish: Black  
weight: 30 gr



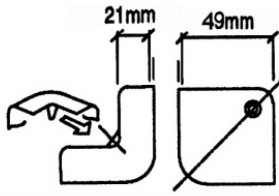
FIXING HOLES Ø 4 mm  
INTERNAL RADIUS 12 mm



### CN5232N

Medium flat corner 2 legs, for plywood thickness 16 mm. Leg depth 69 mm. Width 51 mm

material: Steel 12/10  
finish: Black  
weight: 70 gr



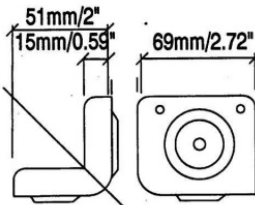
HOLES Ø 4 mm CSK



### CN5272N

Square flat corner 2 legs with countersunk holes. For plywood thickness 20 mm, leg depth and width 49 mm.

material: Steel 12/10  
 finish: Black  
 weight: 40 gr



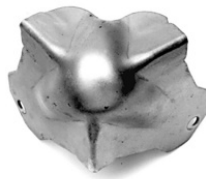
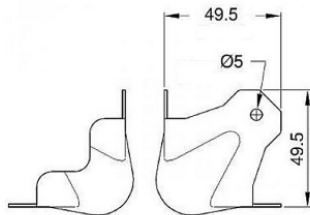
HOLE Dia 4mm/0.157"  
 12mm/0.47" Internal Radius



### CN5242N

Medium corner stackable 2 legs, for plywood thickness 16 mm. Leg depth 69 mm. Width 51 mm.

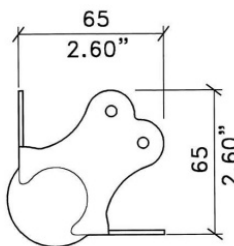
material: Steel 12/10  
 finish: Black  
 weight: 70 gr



### CN2232

Medium ball corner 3 leg, leg depth 49,5 mm.

material: Steel 12/10  
 finish: Zinc  
 weight: 44 gr



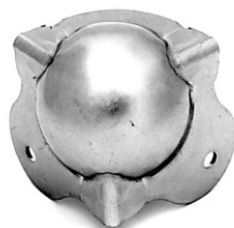
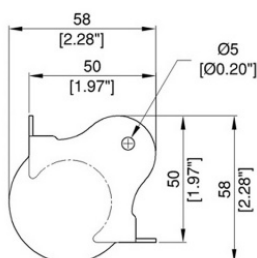
FIXING HOLES 5mm/.20" DIA



### CN2252 - 52N

Heavy duty ball corner 2 legs, for plywood thickness 22 mm. Leg depth 65 mm. - Zinc and black

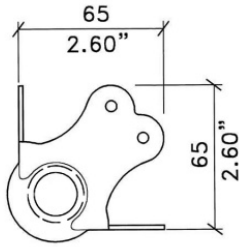
material: Steel 12/10  
 finish: Zinc - N = Black  
 weight: 100 gr



### CN2234

Medium ball corner 2 leg, for plywood thickness 22 mm. Leg depth 49,5 mm.

material: Steel 15/10  
 finish: Zinc  
 weight: 70 gr



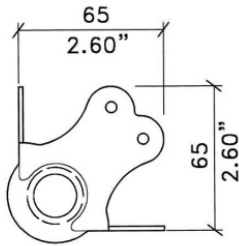
FIXING HOLES 5mm/.20" DIA



### CN2272 - 72N

Heavy duty ball corner for plywood thickness 22 mm. Leg depth 65 mm. Stackable right side - Zinc and black

material: Steel 20/10  
 finish: Zinc - N = Black  
 weight: 100 gr



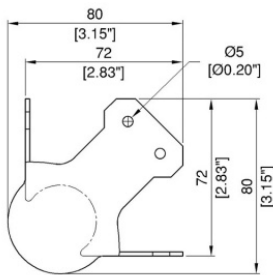
FIXING HOLES 5mm/.20" DIA



### CN2262 - 62N

Heavy duty ball corner for plywood thickness 22 mm. Leg depth 65 mm. Stackable left side - Zinc and black

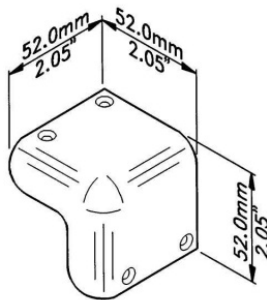
material: Steel 20/10  
 finish: Zinc - N = Black  
 weight: 90 gr



### CN2222 - 22N

Heavy duty ball corner 2 legs, for plywood thickness 20 mm. Leg depth 70 mm. - Zinc and black

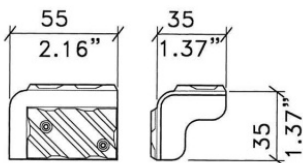
material: Steel 20/10  
 finish: Zinc - N = Black  
 weight: 120 gr



### PL1742

Medium flat plastic corner 2 legs, for plywood thickness 18/20 mm, leg depth and width 50 mm.

material: Plastic  
 finish: Black  
 weight: 10 gr



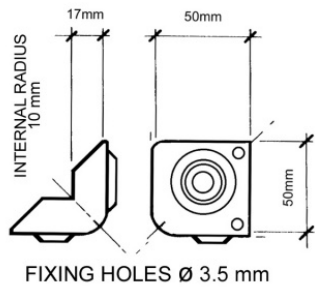
FIXING HOLES 4mm/.16" DIA



### PL1762

Small plastic corner, reliefs for stacking. Leg depth 55 mm. Width 35 mm.

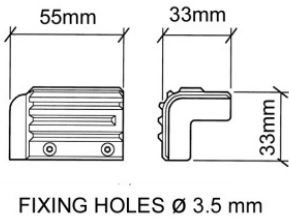
material: Plastic  
 finish: Black  
 weight: 10 gr



### PL1752

Medium plastic corner stackable, for plywood thickness 18/20 mm, leg depth 50 mm.

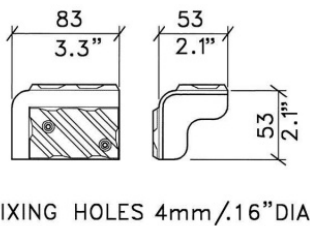
material: Plastic  
finish: Black  
weight: 10 gr



### PL1772

Medium plastic corner, reliefs for stacking. Leg depth 55 mm. Width 33 mm.

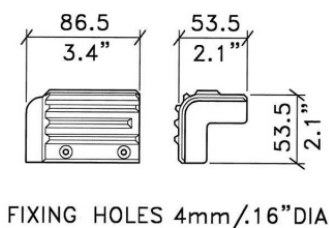
material: Plastic  
finish: Black  
weight: 25 gr



### PL1792

Large plastic corner, reliefs for stacking. Leg depth 83 mm. Width 53 mm.

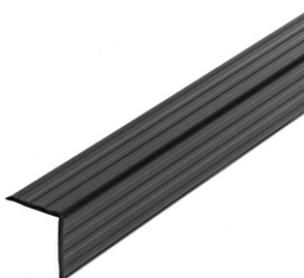
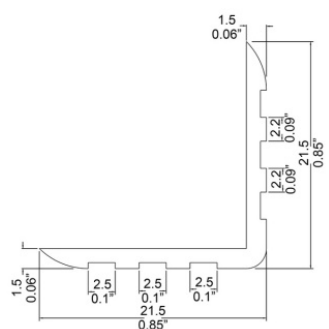
material: Plastic  
finish: Black  
weight: 20 gr



### PL1782

Large plastic corner, reliefs for stacking. Leg depth 86,5 mm. Width 53,5 mm.

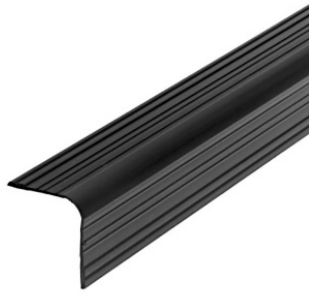
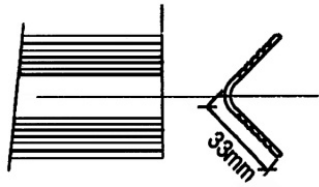
material: Plastic  
finish: Black  
weight: 40 gr



### PL2752

Plastic single angle for protection and covering corners 22 x 22mm.

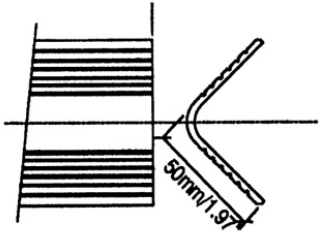
material: Plastic (2mt)  
finish: Black  
weight: 95 gr/mt



### PL2762

Plastic single angle for protection and covering corners 33 x 33mm.

material: Plastic (2mt)  
finish: Black  
weight: 120 gr/mt



### PL2772

Plastic single angle for protection and covering corners 50 x 50mm.

material: Plastic (2mt)  
finish: Black  
weight: 265 gr/mt