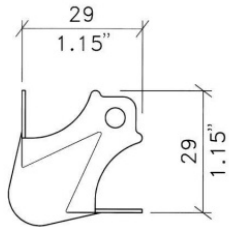


HARDWARE

flight case and cabinet components

CORNERS - vers. 02/2014



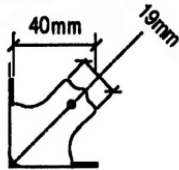
CN1232

Mini knuckle corner, leg depth 29 mm

material: Steel 7.5/10
finish: Nickel
weight: 16 gr.

FIXING HOLES $\varnothing 5\text{mm}$ / .20" DIA

INTERNAL RADIUS 2 mm

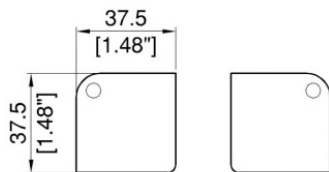


CN1222

Small flat corner, leg depth 40 mm

material: Steel 12/10
finish: Nickel
weight: 37 gr.

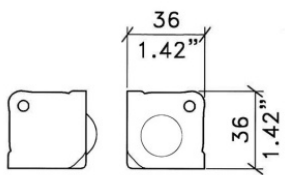
HOLES $\varnothing 4$ mm



CN1242

Small square flat corner, leg depth 36 mm

material: Steel 10/10
finish: Zinc
weight: 30 gr.

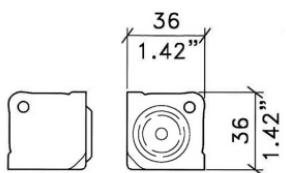


CN1252

Small flat corner with support bracket, leg depth 36 mm

material: Steel 10/10
finish: Zinc
weight: 30 gr.

FIXING HOLES 5mm / .20" DIA

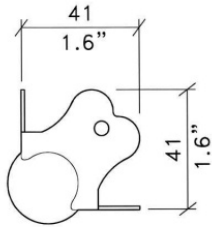


CN1254

Small flat corner stackable, leg depth 36 mm

material: Steel 10/10
finish: Zinc
weight: 30 gr.

FIXING HOLES 5mm / .20" DIA



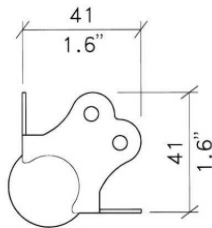
FIXING HOLES 5mm / .20" DIA



CN1212F1

Mini ball corner leg depth 41 mm. 1 fixing hole for leg. - Zinc and black

material: Steel 12/10
finish: Zinc - N = Black
weight: 30 gr.



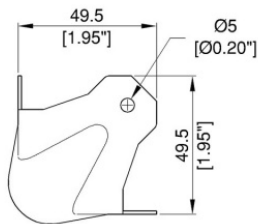
FIXING HOLES 5mm / .20" DIA



CN1212

Mini ball corner leg depth 41 mm. 2 fixing holes for leg. - Zinc and black

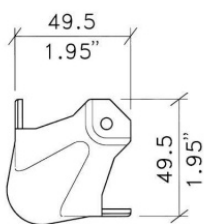
material: Steel 12/10
finish: Zinc - N = Black
weight: 30 gr.



CN1202

Medium ball corner, leg depth 49,5 mm

material: Steel 12/10
finish: Zinc
weight: 50 gr.



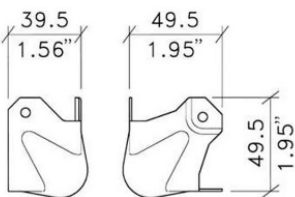
FIXING HOLES 5mm / .20" DIA



CN1204

Medium ball corner, leg depth 49,5 mm and offset for extrusions. - Zinc and black

material: Steel 12/10
finish: Zinc - N = Black
weight: 55 gr.



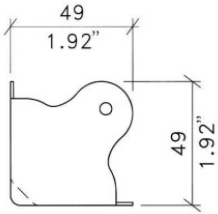
FIXING HOLES 5mm / .20" DIA



CN1206

Brace ball corner, leg depth 39,5 mm and offset for extrusions.

material: Steel 12/10
finish: Zinc
weight: 50 gr.



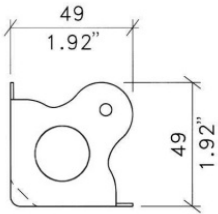
FIXING HOLES 5mm / .20" DIA



CN1262

Medium flat corner, leg depth 49 mm

material: Steel 10/10
finish: Zinc
weight: 42 gr.



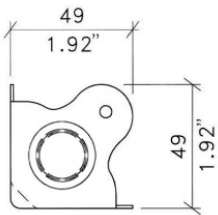
FIXING HOLES 5mm / .20" DIA



CN1272

Medium flat corner with support bracket, leg depth 49 mm

material: Steel 10/10
finish: Zinc
weight: 42 gr.



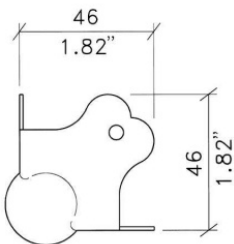
FIXING HOLES 5mm / .20" DIA



CN1292

Medium flat corner stackable, leg depth 49 mm

material: Steel 10/10
finish: Zinc
weight: 42 gr.



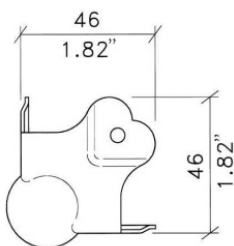
FIXING HOLES 5mm / .20" DIA



CN1218

Medium ball corner, leg depth 46 mm. - Zinc and black

material: Steel 12/10
finish: Zinc - N = Black
weight: 40 gr.



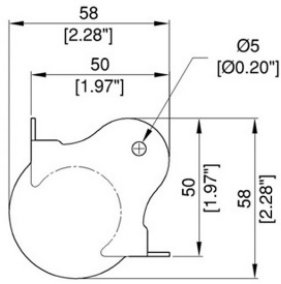
FIXING HOLES 5mm / .20" DIA



CN1216

Medium ball corner, leg depth 46 mm and offset for extrusions. - Zinc and black

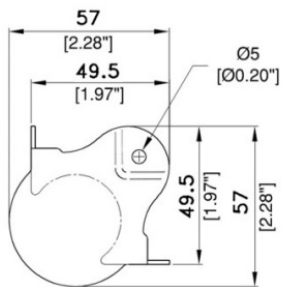
material: Steel 12/10
finish: Zinc - N = Black
weight: 40 gr.



CN3222

Medium ball corner, leg depth 50,8 mm. - Zinc and black

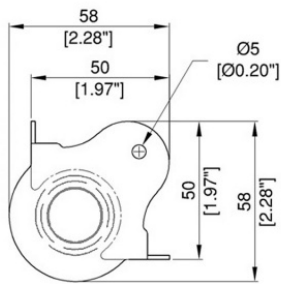
material: Steel 15/10
 finish: Zinc - N = Black
 weight: 80 gr.



CN3262

Medium ball corner, leg depth 49,5 mm and offset for extrusions. - Zinc and black

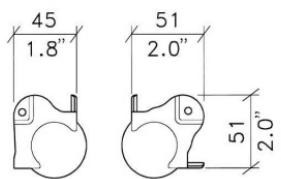
material: Steel 15/10
 finish: Zinc - N = Black
 weight: 70 gr.



CN3224

Medium ball corner stackable, leg depth 50 mm - Zinc and black

material: Steel 15/10
 finish: Zinc - N = Black
 weight: 80 gr.

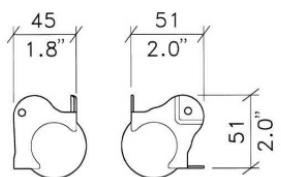


CN3242

Brace ball corner for lidmaker applications, leg depth 45 mm - Zinc and black

material: Steel 15/10
 finish: Zinc - N = Black
 weight: 70 gr.

FIXING HOLES 5mm / .20" DIA

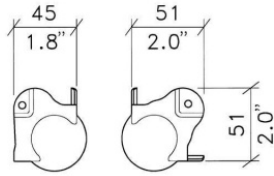


CN3252

Brace ball corner leg depth 45 mm and offset for extrusions or lidmaker applications - Zinc and black

material: Steel 15/10
 finish: Zinc - N = Black
 weight: 70 gr.

FIXING HOLES 5mm / .20" DIA

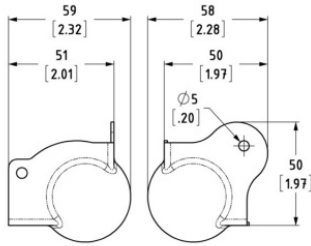


FIXING HOLES 5mm / .20" DIA

CN3232

Brace ball corner leg depth 45 mm and offset for extrusions - Zinc and black

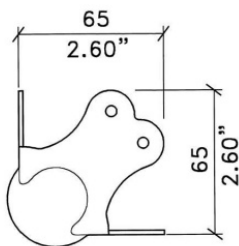
material: Steel 15/10
 finish: Zinc - N = Black
 weight: 70 gr.



CN3226

Brace ball corner for lidmaker applications, leg depth 51 mm

material: Steel
 finish: Zinc
 weight: 82 gr.

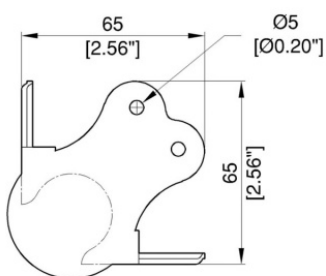


FIXING HOLES 5mm / .20" DIA

CN3202

Brace ball corner, leg depth 65 mm - Zinc and black

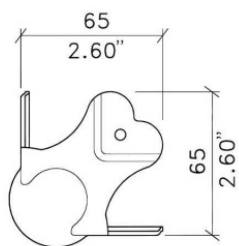
material: Steel 20/10
 finish: Zinc - N = Black
 weight: 120 gr



CN3202L

Brace light ball corner, leg depth 65 mm - Zinc and black

material: Steel 15/10
 finish: Zinc - N = Black
 weight: 90 gr

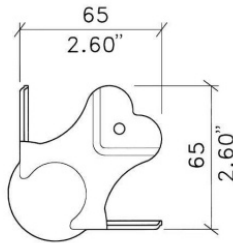


FIXING HOLES 5mm / .20" DIA

CN3212

Heavy duty ball corner, leg depth 65 mm and offset for extrusions - Zinc and black

material: Steel 20/10
 finish: Zinc - N = Black
 weight: 120 gr



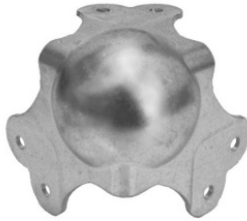
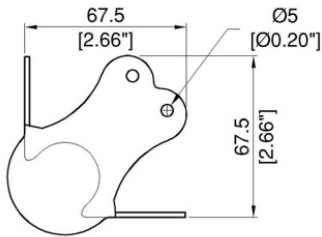
FIXING HOLES 5mm/.20" DIA



CN3212S

Heavy duty ball corner, leg depth 65 mm and offset for extrusions - Zinc and black

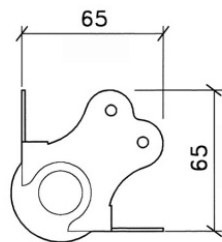
material: Steel 20/10
 finish: Zinc - N = Black
 weight: 120 gr



CN3212SL

Heavy duty ball corner, leg depth 67,5 mm and offset for extrusions, 2 fixing holes for leg

material: Steel
 finish: Zinc
 weight: 120 gr.



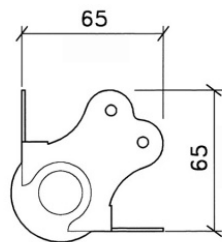
FIXING HOLES Ø 5 mm



CN2212

Heavy duty stackable ball corner, leg depth 65 mm - Zinc and black

material: Steel 20/10
 finish: Zinc - N = Black
 weight: 120 gr



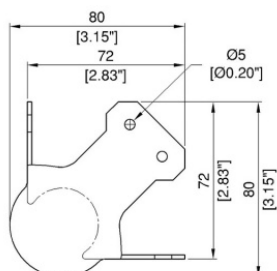
FIXING HOLES Ø 5 mm



CN2212L

Heavy duty stackable ball corner light, leg depth 65 mm - Zinc and black

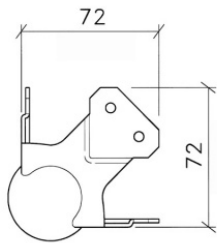
material: Steel 15/10
 finish: Zinc - N = Black
 weight: 90 gr



CN4202

Heavy duty ball corner, leg length 72 mm - Zinc and black

material: Steel 20/10
 finish: Zinc - N = Black
 weight: 140 gr



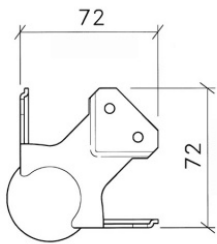
FIXING HOLES \varnothing 5 mm



CN4222

Heavy duty ball corner with offset for extrusions, leg length 72 mm - Zinc and black

material: Steel 20/10
finish: Zinc - N = Black
weight: 140 gr



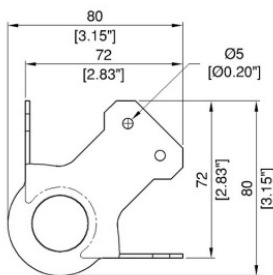
FIXING HOLES \varnothing 5 mm



CN4232

Heavy duty ball corner with offset for extrusions, leg length 72 mm - Zinc and black

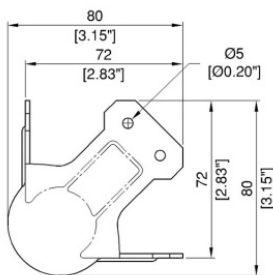
material: Steel 20/10
finish: Zinc - N = Black
weight: 140 gr



CN2242

Heavy duty stackable ball corner, leg length 70 mm - Zinc and black

material: Steel 20/10
finish: Zinc - N = Black
weight: 140 gr



CN4212

Heavy duty ball corner, ribbed, leg length 70 mm - Zinc and black

material: Steel 20/10
finish: Zinc - N = Black
weight: 140 gr