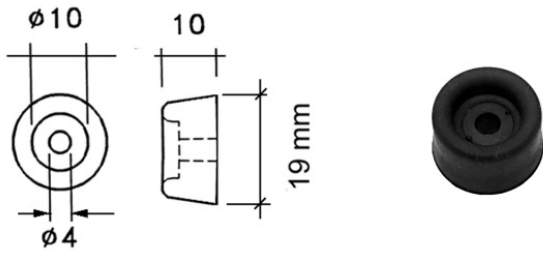


HARDWARE

flight case and cabinet components

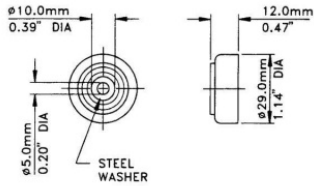
SUPPORT FEET - vers. 02/2014



PL2701

Small rubber foot for lightweight suitcases, h=10mm, Ø=19mm

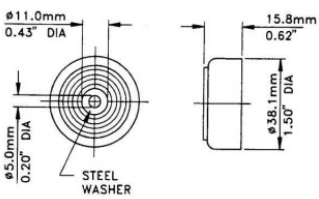
material: Rubber
 finish: Black
 weight: 3.5 gr



PL2712P

Plastic foot with steel washer, h=12mm, Ø=29mm

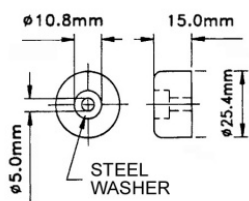
material: Plastic
 finish: Black
 weight: 4.5 gr.



PL2722P

Plastic foot with steel washer, h=15,8mm, Ø=38mm

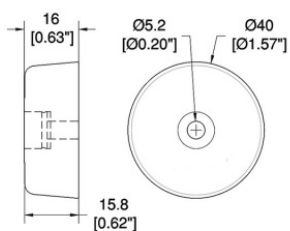
material: Plastic
 finish: Black
 weight: 8 gr.



PL2732G

Rubber foot with washer, h= 15mm

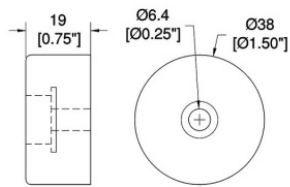
material: Rubber
 finish: Black
 weight: 7 gr



PL2780G

Rubber foot with steel washer, h= 15 mm

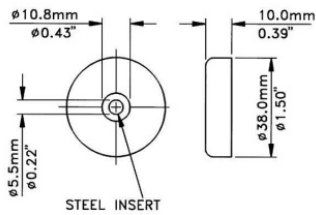
material: Rubber
 finish: Black
 weight: 18 gr.



PL2782G

Rubber foot with steel washer, h= 20 mm

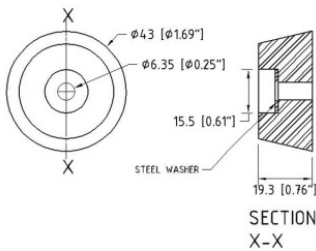
material: Rubber
finish: Black
weight: 22 gr.



PL2784G

Rubber foot with washer, h= 10mm

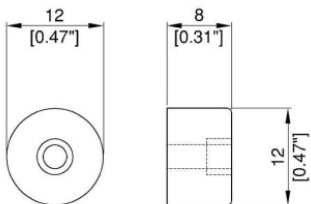
material: Rubber
finish: Black
weight: gr 12



PL2742

Conical rubber foot with washer, h= 19,1 mm

material: Rubber
finish: Black
weight: 24 gr

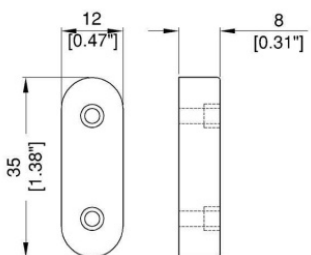


FIXING HOLES 3.2mm/.126"

PL2912

Small plastic foot for Race-Case System

material: Plastic
finish: Black
weight: 3 gr

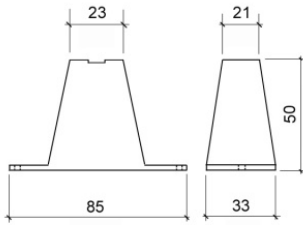


FIXING HOLES 3.2mm/.126"

PL2902

Plastic foot 2 fixing holes. For Race-Case System

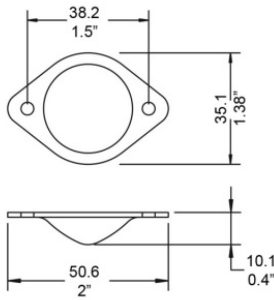
material: Plastic
finish: Black
weight: 3 gr



PL2751

Feet for extensibe handle

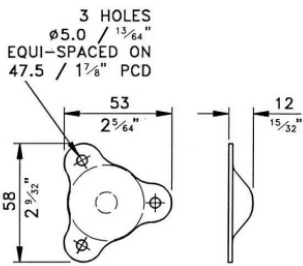
material: Nylon
 finish: Black
 weight: 22 gr



AC7322

Round glide 2 fixing holes

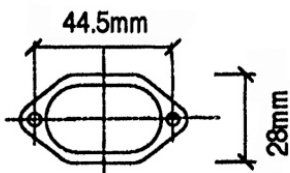
material: Steel
 finish: Zinc
 weight: 15 gr



AC7302

Round glide 3 fixing holes

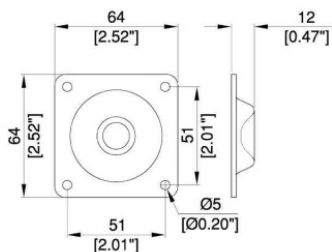
material: Steel
 finish: Zinc
 weight: 30 gr



AC7312

Oval glide 2 fixing holes

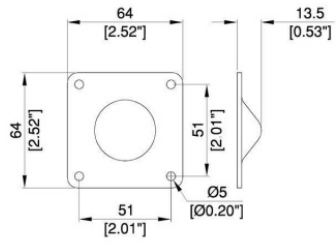
material: Steel
 finish: Zinc
 weight: 15 gr



AC7382

Large stacking foot - Female

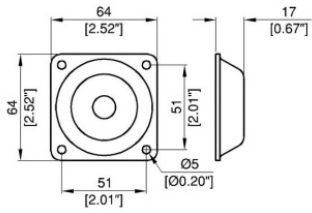
material: Steel
 finish: Zinc
 weight: 70 gr



AC7392

Large stacking foot - Male

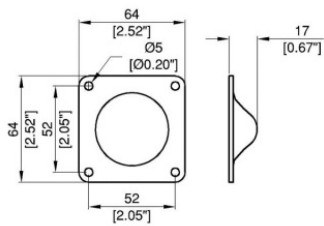
material: Steel
 finish: Zinc
 weight: 70 gr



AC7382H

Large female stacking foot. For
 brace ball corner

material: Steel
 finish: Zinc
 weight: 70 gr



AC7392H

Large male stacking foot. For brace
 ball corner

material: Steel
 finish: Zinc
 weight: 70 gr