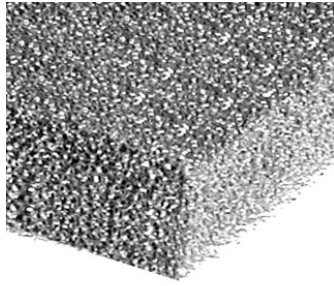
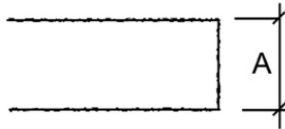


HARDWARE

flight case and cabinet components

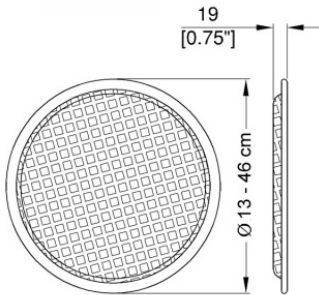
SPEAKER GRILLES, PORTS AND TUBES - vers. 02/2014



RZCG...

Open cells foam for protection loudspeakers. Thickness from 5 to 20 mm

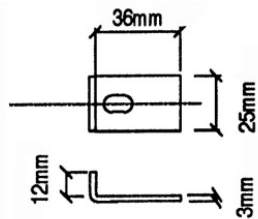
material: Polyurethane
 finish: Black
 weight: 75 - 300 gr/m²



AP54...

Protection grilles for Speaker

material: Steel 12/10
 finish: Black
 weight: 80 - 960 gr.



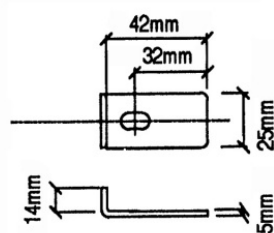
FIXING SLOTS 7 x 11 mm



AP6452

Little speaker clamp suit for grilles AP54

material: Steel 30/10
 finish: Black
 weight: 30 gr



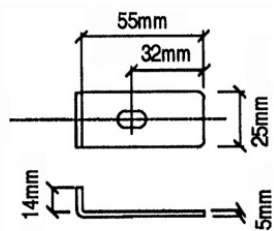
FIXING SLOTS 9 x 12 mm



AP6462

Speaker clamp heavy duty suit for grilles AP54

material: Steel 50/10
 finish: Black
 weight: 50 gr



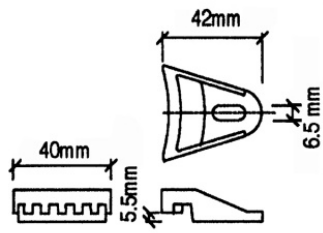
FIXING SLOTS 9 x 12 mm



AP6472

Large speaker clamp suit for grilles AP54

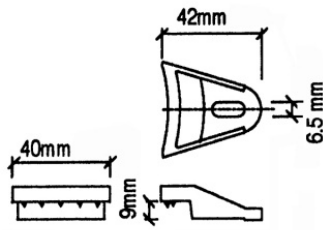
material: Steel 50/10
 finish: Black
 weight: 63 gr



AP6482

Plastic speaker clamp suit for grilles AP54. Fixing thickness 5 mm

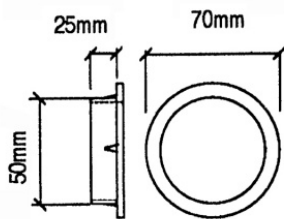
material: Plastic
 finish: Black
 weight: 5 gr



AP6492

Plastic speaker clamp suit for grilles AP54. Fixing thickness 9 mm

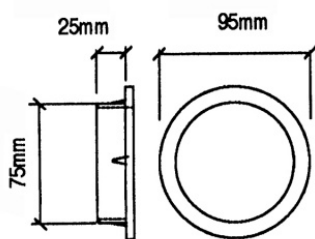
material: Plastic
 finish: Black
 weight: 5 gr



AP7412

Speaker cabinet port trim Ø 50 mm

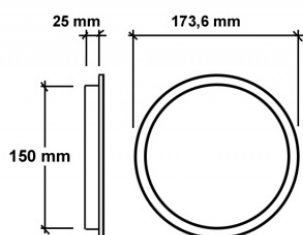
material: Plastic
 finish: Black
 weight: 10 gr



AP7422

Speaker cabinet port trim Ø 75 mm

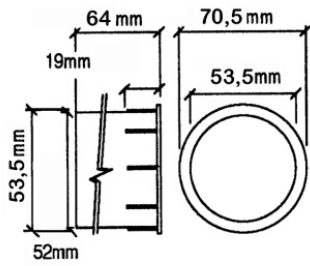
material: Plastic
 finish: Black
 weight: 13 gr



AP7432

Speaker cabinet port trim Ø 150 mm

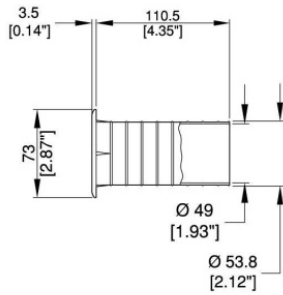
material: Plastic
 finish: Black



AP7402

Speaker port tube Ø 53,5 mm

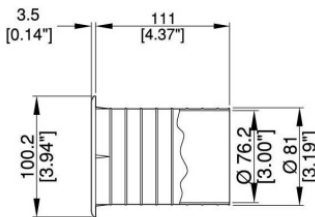
material: Plastic
finish: Black
weight: 15 gr



AP7442

Speaker port tube Ø 54 mm

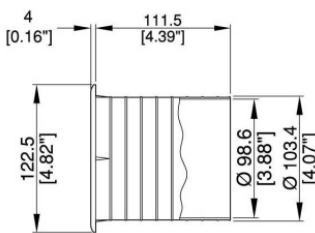
material: Plastic
finish: Black
weight: 39 gr



AP7452

Speaker port tube Ø 81 mm

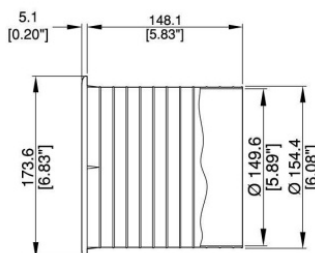
material: Plastic
finish: Black
weight: 50 gr



AP7472

Speaker port tube Ø 103 mm

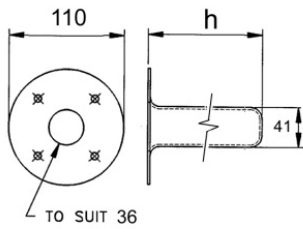
material: Plastic
finish: Black
weight: 60 gr



AP7462

Speaker port tube Ø 154 mm

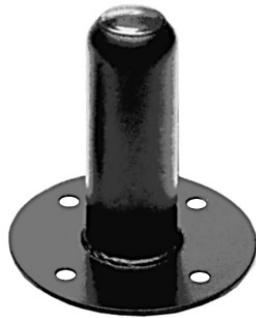
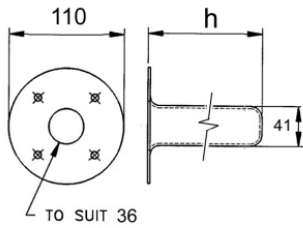
material: Plastic
finish: Black
weight: 150 gr



PL5700

Steel speaker mounting top hat,
depth 60 mm

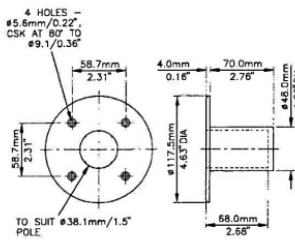
material: Steel
finish: Black
weight: 290 gr.



PL5701

Steel speaker mounting top hat,
depth 107 mm

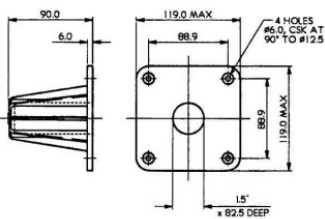
material: Steel
finish: Black
weight: 380 gr.



PL5722

Plastic speaker mounting top hat,
depth 74 mm

material: Plastic
finish: Black
weight: 110 gr



PL5702

Plastic speaker mounting top hat,
depth 90 mm

material: Plastic
finish: Black
weight: 142 gr